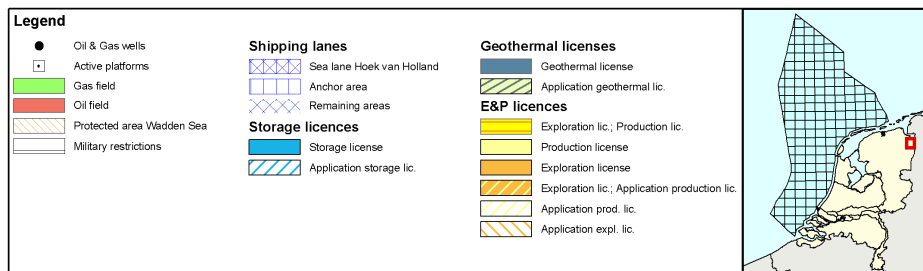
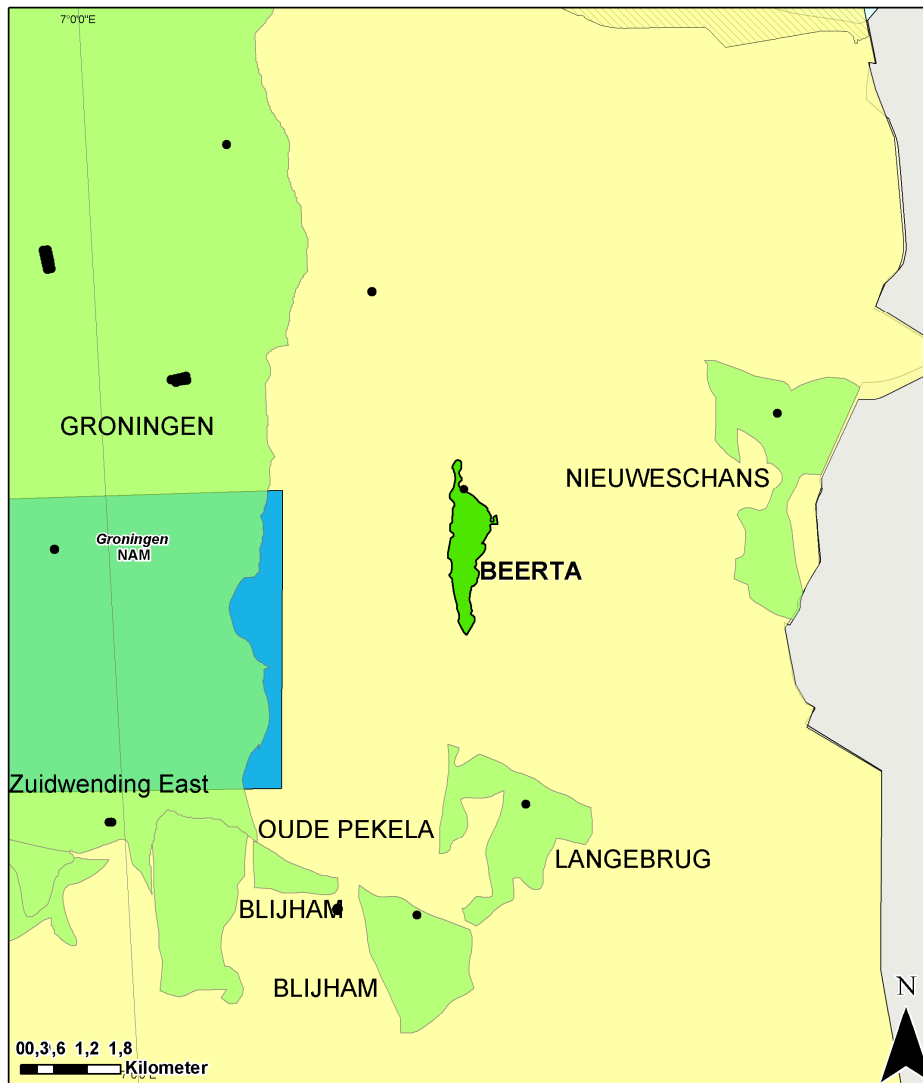




Fact sheet Beerta

Stranded fields - Q4 2009



Location map of the Beerta gas field

General information

The Beerta gas field is situated four km east of the giant Groningen field. The field was discovered in 1992 with exploration well Beerta-01 (BTA-01). The gas is trapped in the Slochteren Formation (ROSL). The field has not been developed and currently lies in the Groningen concession of NAM.

For general information on the geology of the Beerta area reference is made to the Geological Atlas of the Netherlands, map sheets III Rottumeroog-Groningen and VI Veendam-Hoogeveen in which the geological history of the area is explained.

Sequence of events

Date	Event
04-04-1963	Production license Groningen effective (NAM)
23-11-1991	Spud date well Beerta-01 (NAM)
22-01-1992	TD reached 3357.0 (m ah)
23-01-1992	RFT 3383.8-3513.0 (m ah)
23-01-1992	RFT sample (ROSL) 3415.2 (m ah)
4/10-12-1992	Production test 3417.0-3407.0 (m ah)
31-01-1992	Well suspended

Reservoir data

Geological unit	Top m ah	Base m ah	Net m ah	Porosity %
RGD & NOGEP A (1993)				
Zechstein 1 Carbonate ZE1C	3369.0	3371.5	2.5	5.0
Slochteren Sandstone ROSL	3407.0	3488.0	81.0	12.0

Hydrocarbon specifications

Reservoir	CH ₄ %	CO ₂ %	N ₂ %	H ₂ S %	GHV MJ/m ³
Slochteren ROSL	93.5	1.2	2.7	-	39.2

Contacts

Type	GWC tvd ss
ROSL gas field	3209.5

Volumes

Reservoir	GIIP 10 ⁹ m ³	Reserves 10 ⁹ m ³		
		Proven	Expected	Possible
Slochteren Sandstone	0.5-1		0-0.5	

Productivity

Test depth	Reservoir pressure in bar abs	CGR m ³ / 10 ⁶ m ³	WGR m ³ / 10 ⁶ m ³	Q well production at s.c. m ³ /d	Drawdown bar
Slochteren Sandstone 3407-3417 m-RT	395.3	3.7	6.2	195000	142.8

Well status

Beerta-01: Closed-in

Infrastructure

The field is situated approximately five kilometers from existing gas treating facilities to the northwest.

Public References

Rijks Geologische Dienst 1995, Geological Atlas of the Deep subsurface of the Netherlands. Mapsheet III Rotummeroog-Groningen
RGD & NOGEPa 1993, Stratigraphic nomenclature of the Netherlands, Mededelingen Rijks Geologische Dienst, Nr. 50
NITG-TNO 2000, Geological Atlas of the Deep subsurface of the Netherlands. Mapsheet VI Veendam-Hoogeveen

NAM 1992: Composite well log; [Beerta-01](#). *On open file*

For more information stranded Oil&Gas fields in the Netherlands:

<http://www.nlog.nl/nl/reserves/reserves/stranded.html>

For released Well data and Seismic data contact DINOloket:

<http://www.dinoloket.nl>

For geological maps of the deep subsurface of the Netherlands:

http://www.nlog.nl/nl/pubs/maps/geologic_maps/NCP1.html

Liability

Facts and figures supplied on this fact sheet have been compiled carefully. Great care has been taken to ensure correct coverage of all information. TNO and the Ministry of Economic Affairs do not accept any liability for any direct or indirect damage of any kind ensuing from the use of information published on this sheet.