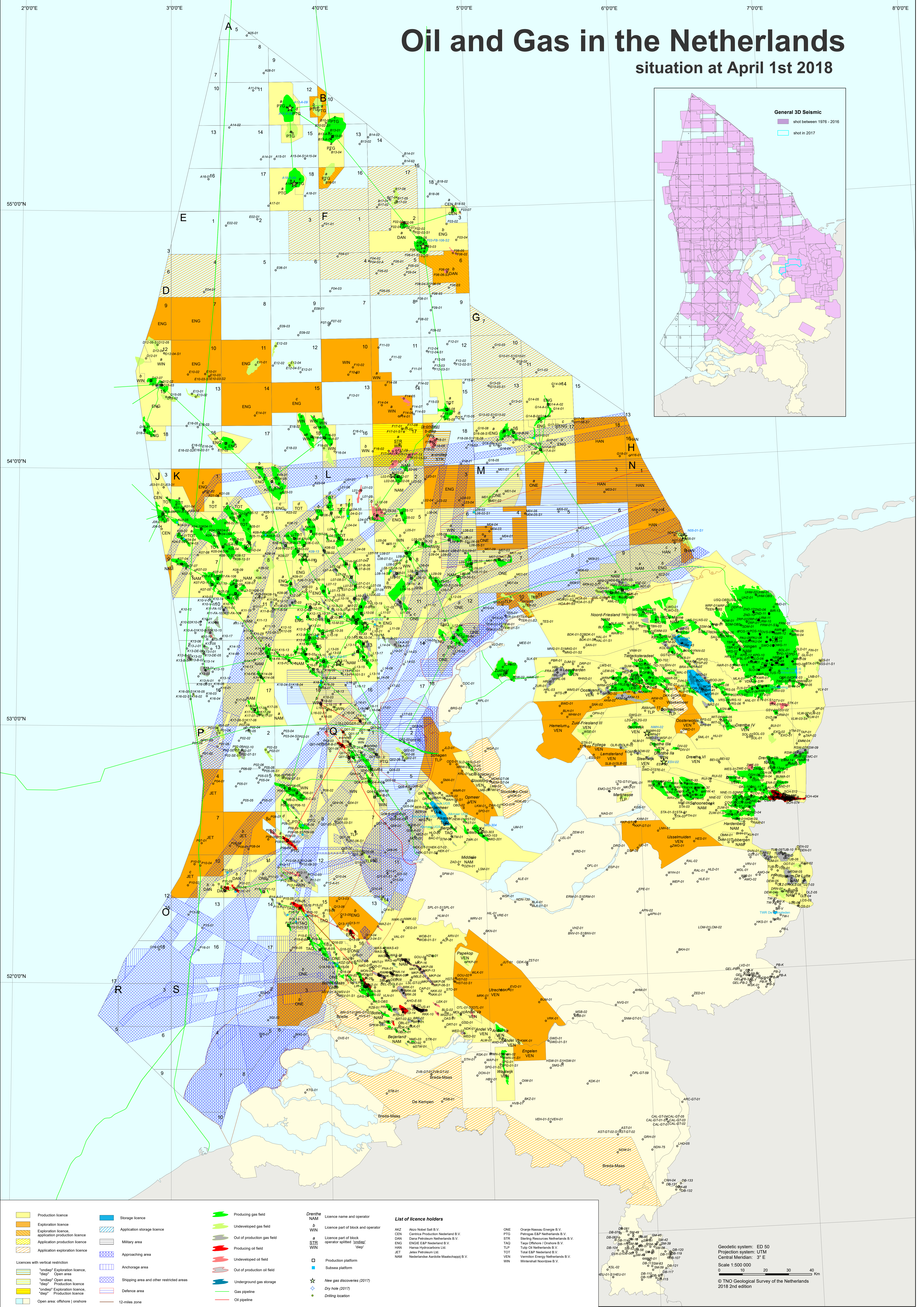


Oil and Gas in the Netherlands

situation at April 1st 2018



- | | | |
|--|--|-----------------------------|
| Production licence | Storage licence | Producing gas field |
| Exploration licence | Application storage licence | Undeveloped gas field |
| Application production licence | Military area | Out of production gas field |
| Application exploration licence | Approaching area | Producing oil field |
| Licences with vertical restriction | Anchorage area | Undeveloped oil field |
| "open" Exploration licence, "deep" Open area | Shipping area and other restricted areas | Out of production oil field |
| "open" Open area, "deep" Production licence | Defence area | Underground gas storage |
| "open" Production licence, "deep" Production licence | 12-miles zone | Gas pipeline |
| Open area: offshore onshore | | Oil pipeline |

- Drenthe**
NAM
WIN
STR
WIN
- Licence name and operator
 Licence part of block and operator
 Licence part of block operator applied "30step" "deep"
 Production platform
 Subsea platform
 New gas discoveries (2017)
 Dry hole (2017)
 Drilling location

List of licence holders	
AKZ	Alzo Nobel Salt B.V.
CEN	Centrica Production Netherlands B.V.
DAN	Dana Petroleum Netherlands B.V.
ENG	ENGIE E&P Netherlands B.V.
HAN	Hansa Hydrocarbons Ltd.
JET	Jaxa Petroleum Ltd.
NAM	Nederlandse Aardolie Maatschappij B.V.
ONE	Charge-Nassau Energie B.V.
PTG	Petrogas E&P Netherlands B.V.
STR	Starog Resources Netherlands B.V.
TAD	Tapp Oilsew (Onshore) B.V.
TLP	Tulp Oil Netherlands B.V.
TOT	Total E&P Nederland B.V.
VEN	Venmoet Energy Netherlands B.V.
WIN	Winnhulst Noordzee B.V.

DB-01	DB-02	DB-03	DB-04	DB-05	DB-06	DB-07	DB-08	DB-09	DB-10	DB-11	DB-12	DB-13	DB-14	DB-15	DB-16	DB-17	DB-18	DB-19	DB-20	DB-21	DB-22	DB-23	DB-24	DB-25	DB-26	DB-27	DB-28	DB-29	DB-30	DB-31	DB-32	DB-33	DB-34	DB-35	DB-36	DB-37	DB-38	DB-39	DB-40	DB-41	DB-42	DB-43	DB-44	DB-45	DB-46	DB-47	DB-48	DB-49	DB-50	DB-51	DB-52	DB-53	DB-54	DB-55	DB-56	DB-57	DB-58	DB-59	DB-60	DB-61	DB-62	DB-63	DB-64	DB-65	DB-66	DB-67	DB-68	DB-69	DB-70	DB-71	DB-72	DB-73	DB-74	DB-75	DB-76	DB-77	DB-78	DB-79	DB-80	DB-81	DB-82	DB-83	DB-84	DB-85	DB-86	DB-87	DB-88	DB-89	DB-90	DB-91	DB-92	DB-93	DB-94	DB-95	DB-96	DB-97	DB-98	DB-99	DB-100
-------	-------	-------	-------	-------	-------	-------	-------	-------	-------	-------	-------	-------	-------	-------	-------	-------	-------	-------	-------	-------	-------	-------	-------	-------	-------	-------	-------	-------	-------	-------	-------	-------	-------	-------	-------	-------	-------	-------	-------	-------	-------	-------	-------	-------	-------	-------	-------	-------	-------	-------	-------	-------	-------	-------	-------	-------	-------	-------	-------	-------	-------	-------	-------	-------	-------	-------	-------	-------	-------	-------	-------	-------	-------	-------	-------	-------	-------	-------	-------	-------	-------	-------	-------	-------	-------	-------	-------	-------	-------	-------	-------	-------	-------	-------	-------	-------	-------	-------	--------

Geodetic system: ED 50
 Projection system: UTM
 Central Meridian: 3° E
 Scale 1:500 000
 © TNO Geological Survey of the Netherlands
 2018 2nd edition